

Schlesinger Bird Preserve

Trail Distances

Figure 8 Trail 3/4 Mile

Easy



Leave No Trace,
keep our preserves clean

Open dawn to dusk

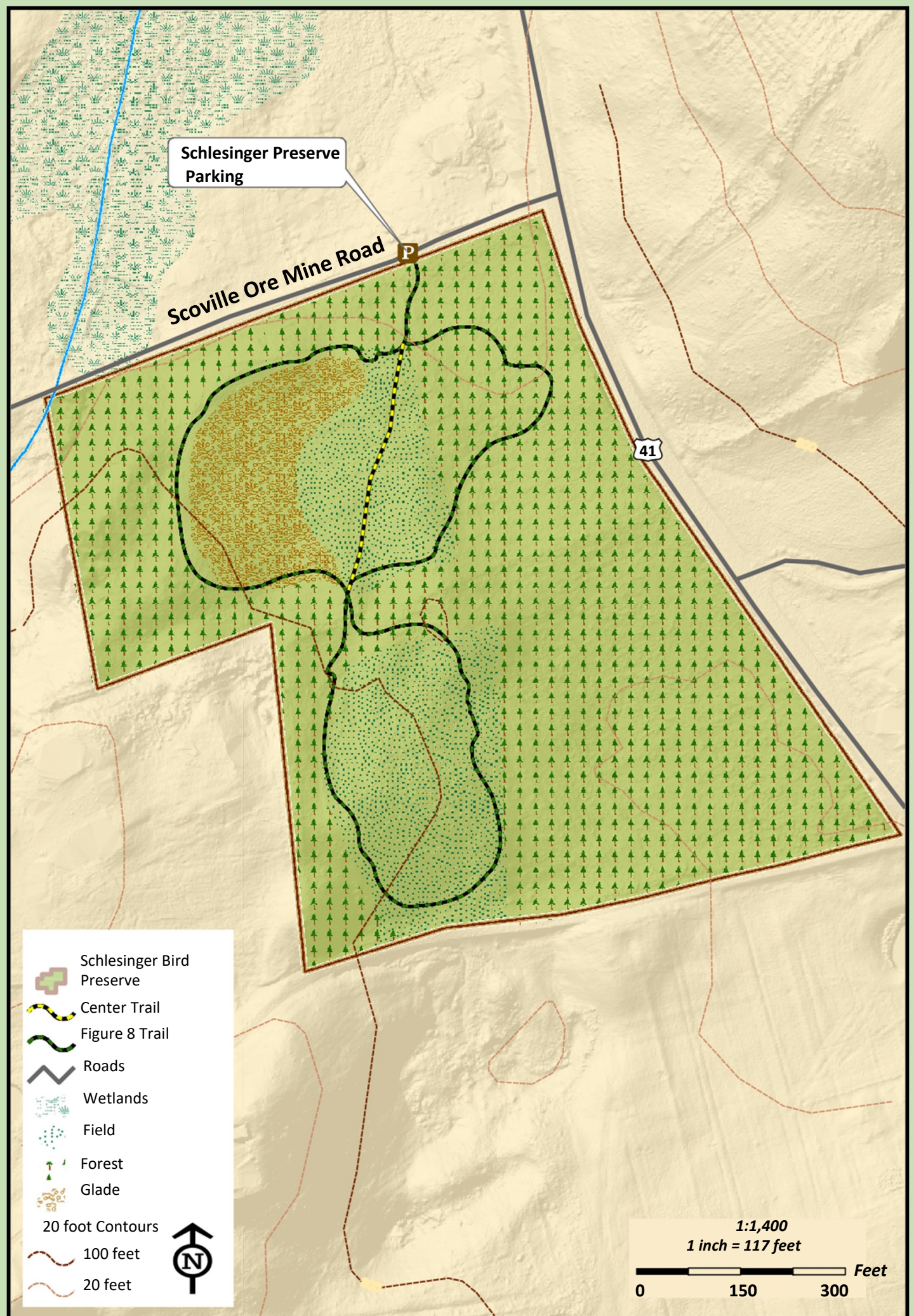
This trail made possible by
generous donations.

Your support keeps Salisbury
lands protected.

Please consider donating
to salisburyassociation.org
860-435-0566



1:1,400



In 1998 Mary Schlesinger donated 19 acres to the Salisbury Association.

The property was studied to determine its best use, and a choice was made to optimize its potential as early successional bird habitat rather than keep it as pasture. The habitat is maintained by rotational mowing that leaves a mixture of shrubs and grasses. Since 2001 the Land Trust holds a Spring bird walk here where dozens of species have been identified. There are two short connected loop trails totaling 3/4 miles.

The preserve is located at the intersection of Route 41 and Scoville Ore Mine Road 2 1/4 miles north of the town center. A small parking area is off Scoville Ore Mine Road.



Salisbury Association
Land Trust
Conserving Our Land.